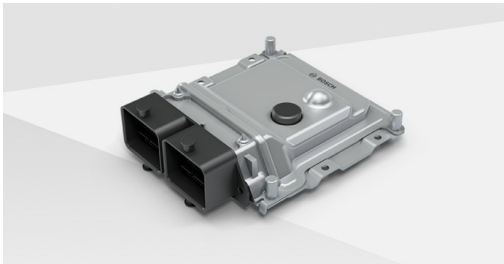


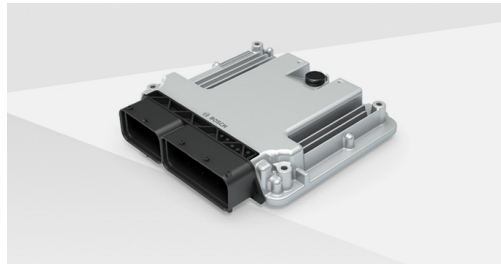
# Vehicle control unit

The powertrain domain controller as central E/E architecture component for all powertrain topologies

## High performance for versatile applications



Vehicle control unit standard mid: controller for integration into the powertrain. Scalable concept for hardware and software.



Vehicle control unit standard max: controller for integration into powertrain and extended applications such as charge communication.

- As the central control unit for the powertrain, the vehicle control unit coordinates various functions, such as torque distribution and thermal management. It enables the integration of new functions like range management, charging management, or various kinds of predictive strategies
- The vehicle control unit is used in all types of powertrains for passenger cars, commercial vehicles and in the off-highway segment. It supports cloud-based solutions and can cover functions for safe vehicle operation in highly-automated vehicles in the event of a fault/if an error occurs

## Versatile

Can handle the growing variant diversity and complexity in vehicles

## Powerful

Makes processing power available with high-performance microcontrollers